

MURO MURO CORPORATION

CH7280

VISLIDER

Model : CH7280SU / CH7280LU

Instruction manual (with warranty card)

◆ **Safety precautions** ◆



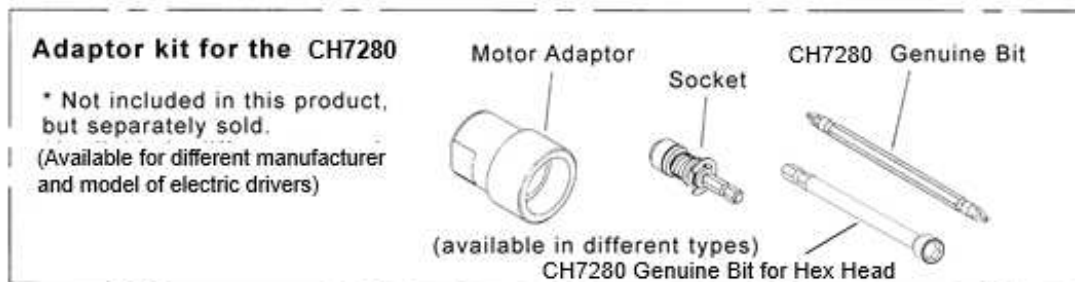
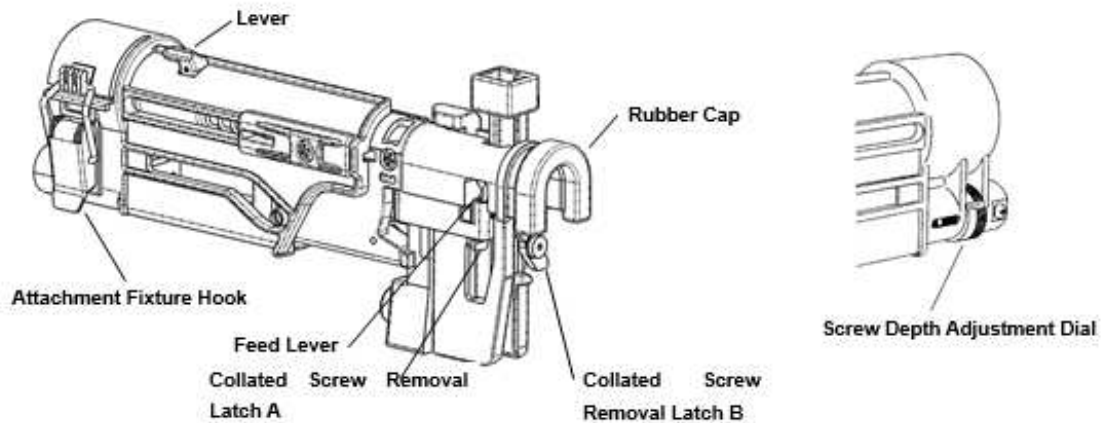
**Denotes risk of personal injury, loss of life or damage to the tool
In case of failure to follow instructions in this manual.**

- ① **Read instructions carefully prior to operating power tool** . Read and understand all section in the instruction manual
- ② Be sure to wear **protective goggles and dust-proof mask** while operating tool
- ③ Depending on the work environment, ear p lugs, hardhat, safety shoes, and other personal protective equipment may be required
- ④ **Use only** specified **Adaptor Kit** recommended by Muro for your screwdriver model.
- ⑤ **Use only** specified "**VISROPE STRIPS**" collated screws
- ⑥ **Do not overreach**, ensure proper footing and balance to have control of power tools
- ⑦ **Wear proper clothing**, avoid loose clothes, jewelry or any accessories that may catch onto tool
- ⑧ Keep workplace clean, tidy and well lit to prevent accident
- ⑨ **Do not direct power tool towards anybody** at all time
- ⑩ **Do not place** hands, feet and/or head **close to the tip** (screw outlet) of the tool while operating
- ⑪ **Do not operate** tools under **influence of drugs, alcohol or any medication** to prevent serious injury
- ⑫ **Do not use** power tools **near volatile, flammable substances** such as gasoline, thinner, gas, paint, and adhesive to prevent catching fire or explosion
- ⑬ **Do not expose power tool under rain or wet condition** to prevent risk of electric shock
- ⑭ Store power tools, accessories and consumable parts outreach of children and untrained personnel
- ⑮ Grounded tools must be plugged into outlet properly installed accordance with all codes and ordinance
- ⑯ Handle power tools with care. Dropping or hitting may result in tool malfunction
- ⑰ Keep these instructions in a safe place for future references
- ⑱ **DO NOT TOUCH ANY METAL PART OF THE TOOL** when driving into walls, floor etc where live electrical wires may be encountered
- ⑲ **When operating power tool outdoor, use extension cord marked "W" or "WA"** to reduce risk of electric shock.
- ⑳ **Do not use** tool if switch malfunction(on/off) or any misalignment in the tool

◆ **Specifications** ◆

Model		CH7280SJ	CH7280LJ
Length (without accessories)		Approx. 8-3/4"	Approx. 9-1/4"
Weight (without accessories)		Approx. * * * lbs	Approx. * * * lbs
Applicable screw	Screw Diameter	#10 to #12	#10 to #12
	Screw Length	5/8" to 3/4"	1" to 1-1/2"
	Screw Head	HEX (Partially, specified washer available) 、 FLAT HEAD (Partially, specified washer available) 、 WAFER、 THIN WASHER HEAD	

◆Parts Illustration◆



◆Setting up the specific adaptor kit◆

Method to mount the adaptor kit will varies depending on the manufacturer and model of your screwdriver. Refer to "How to mount by screwdriver type" that comes with the specific adaptor kit.

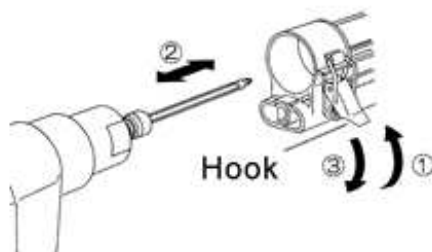
◆ Attaching and detaching the genuine bit(Other than for hex head)◆



Attaching ① Pull and hold sleeve toward the electric driver.
② Insert the bit into the socket and release the sleeve back into place.
⊗ Make sure the bit is tight and hold in position.

Detaching ① Pull and hold sleeve toward the electric driver.
② Draw out the bit.
⊗ The CH7280 genuine bit(Other than for hex head), which comes with the specific adaptor kit has a double-end type bit. When one side has worn out, use the other side. Replace the bit when both the heads have worn out.

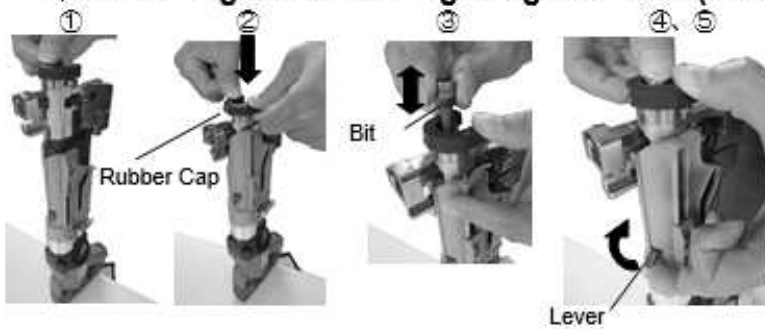
◆ Mounting and dismounting the attachment◆



Mounting ① Lift up the hook.
② Insert the electric driver's adaptor into this attachment.
⊗ Make sure the bit fits into the cylindrical tube
③ Tilt down the hook.

Dismounting ① Lift up the hook.
② Remove the electric driver's adaptor out of this attachment.

◆ Attaching and detaching the genuine bit (for HEX head)◆



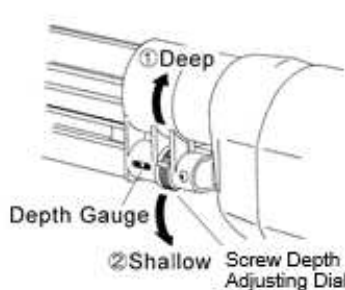
Attaching

- ① After mounting the attachment, hold the attachment vertically.
- ② Push down the rubber cap.
- ③ Insert the bit into the attachment.
- ④ Pull the lever and push the bit.
- ⑤ Release the lever.

Detaching

- ① Hold the attachment vertically.
- ② Push down the rubber cap.
- ③ Pull the lever and draw out the bit.

◆ Adjusting the screw-driving depth◆



- ① Turn the screw depth adjusting dial upward to achieve more depth.
 - ② Turn the screw depth adjusting dial downward to achieve less depth.
- ※ Four clicks make an increment of 1 mm.

[Adjustment other than HEX head]

Adjust the screw-driving depth with screw depth adjusting dial.

[Impact driver]

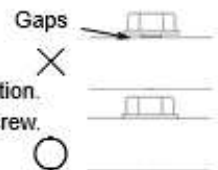
Adjust the depth with no gaps between the head of screw and application.

The impact driver's clutch is activated to completely tighten up the screw.

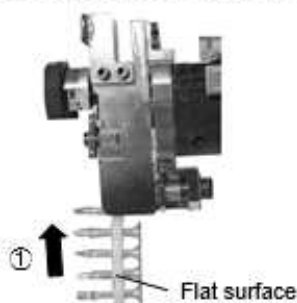
[Screw driver]

Adjust the depth to have no gaps between the head of screw and application.

Excessive depth adjustment may cause screw idles.



◆ Attaching and detaching the specific collated screws◆

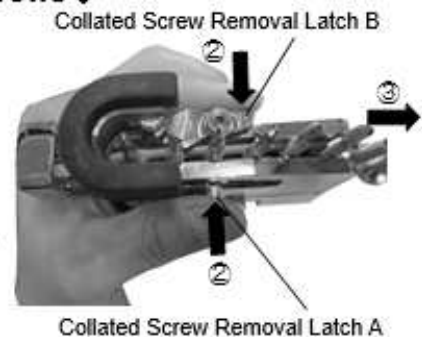


Attaching

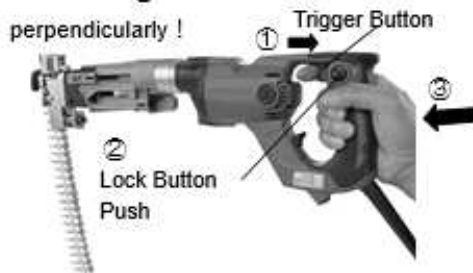
- ① Place the VISROPE STRIPS in the direction shown in the figure

Detaching

- ② Hold the attachment in one hand meanwhile pressing onto the collated screw take-out latch A & B simultaneously
- ③ Remove/ pull out the VISROPE STRIPS.



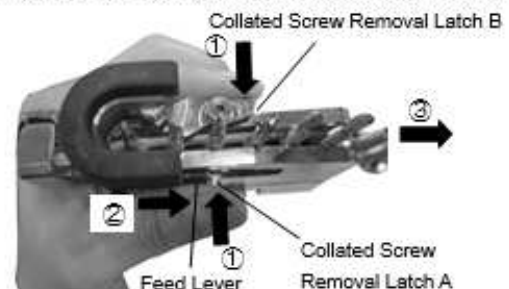
◆ Driving the screws◆



- ① Push the electric driver's trigger switch to the ON position.
 - ② Press the lock button for driver to run continuously.
 - ③ Apply and push the tool perpendicularly onto the desired surface to screw on.
- CH7280 stops the end of stroke. The electric driver's clutch is activated to completely tighten up the screw.

◆ Troubleshooting◆

- Two screws fed at once, or screw jammed and stuck.



- ① Hold the attachment on one hand meanwhile pressing onto the collated screw removal latch A & B.
- ② Lower the Feed Lever.
- ③ Make sure the screws slide smoothly, and pull out the VISROPE STRIPS.

◆Maintenance and inspection◆

1. After each use, be sure to clean up power tool. Powder plaster, dust and dirt stuck on the tool may cause trouble or issue for next operation
2. To wipe and clean power tool, use dry cloth or neutral detergent-soaked cloth. Do not use gasoline, thinner or similar solution to prevent damage in the power tool. Never wash power tool with water to avoid any rust or tool malfunction
3. The bit of the adaptor kit is consumable parts. If the bit on both ends have worn out, immediately replace with a new one. ✖Worn-out bit may cause poor tightening or damage to the screw head.
4. Store power tool in a dry, cool place. Keep it outreach of children and untrained personnel. Place tool on a flat spot to prevent any falling damage
5. Do not disassemble and repair the power tool yourself. For repairs, contact your dealer.

VISLIDER Auto Feed Screwdriving Attachment
Product Registration: Online OR Mail-in Warranty Card to Service Centre

- This is your Muro product registration card. Proper registration may serve as proof of purchase in case original receipt is lost or misplaced. **Please fill out registration card and return by mail OR register online at www.muro.com.** Muro North America Inc. provide a 6 months warranty after the date of purchase by the end-user against defective workmanship or material. This warranty does not cover defects or damage due to misuse, abuse, or normal wear and tear. Warranty is void if any screws other than VISROPE (Muro collated screw) are used. For any issue or trouble arise, product must be returned to place of purchase. Detailed warranty information printed on last page of this booklet.
- IN NO EVENT SHALL MURO BE RESPONSIBLE FOR ANY DIRECT, INDIRECT, SPECIAL OR CONSEQUENTIAL DAMAGES, EVEN IF MURO IS INFORMED ABOUT THEIR POSSIBLE EXISTENCE, INCLUDING ANY LOSS OR DAMAGE ARISING OUT OF, CONNECTED WITH, OR RESULTING FROM THE MANUFACTURE, SALE, DELIVERY, RESALE, REPAIR, REPLACEMENT, USE, MISUSE, OR PERFORMANCE OF ANY PRODUCT
- SOME STATES DO NOT ALLOW THE EXCLUSION OR LIMITATION OF INCIDENTAL OR CONSEQUENTIAL DAMAGES, SO THAT THE ABOVE MAY NOT APPLY TO YOU
- THE LAW OF SOME JURISDICTIONS LIMIT OR DO NOT ALLOW THE DISCLAIMER OF CONSEQUENTIAL DAMAGES. IF THE LAWS OF SUCH JURISDICTION APPLY TO ANY CLAIM BY OR AGAINST THE SELLER, THE LIMITATION AND DISCLAIMERS CONTAINED HERE SHALL BE TO THE GREATEST EXTENT PERMITTED BY LAW

CH7280 Attachment Warranty Card

Model		CH7280SJ CH7280LJ	Warranty period	6 months after date of purchase
Date of purchase				
Serial Number				
Customer	Name			Phone
	Address			
Dealer	Name			Phone
	Address			

Please go to the Muro website to Register your Purchase
 (Please Note: Warranty is voided on products not registered)

www.muro.com/customer_service/product_registration/